

DC MOTORS

ELECTRIC SCOOTER AND BICYCLE MOTORS

High-performance 24 Vdc motors for electric scooters and bicycles, Schwinn, GT, Mongoose, Izip (Currie Technologies).



350 watts. 2600 RPM.

22 Amps. Standard on other electrics as well. 4" diameter x approx. 4" long. Three-hole mounting flange - 0.25" diameter holes on approx. 3.9" centers. All have 3/8" (8mm) dia. outer shaft, 10mm diameter inner shaft, equipped with either an 11 tooth sprocket or a Roller Clutch with a 15 tooth sprocket for #25 roller chain.

CAT#	Sprocket	Lead length	Price
DCM-1352	11T	12"	\$20.00
DCM-1350	RC / 15T	12"	\$24.00
DCM-1353	11T	24"	\$20.00

24 VOLT 250 WATT ELECTRIC SCOOTER MOTOR W/ HORIZONTAL MOUNT BRACKET

24VDC 250W 3000RPM electric scooter motor. Rated 15A. Powerful, reversible, four brush permanent magnet ball bearing motor. 11 tooth sprocket for #25 chain. 12" power leads. Dimensions: 4" dia. x 3.55" wide (excluding shaft). 0.375" dia. shaft. Mounting bracket measures 4.35" x 2.18" with 4 threaded mounting holes. Weight 4.25 lbs.



CAT# DCM-1250 \$25.00 each

24VDC 135W ELECTRIC SCOOTER MOTORS

Model XYD-15B. For Currie Technologies electric scooters. 24Vdc, 135W, 10A, 3000RPM. 2.65" dia. x 4.05" long, excluding shaft. 5/16" diameter (8mm) flattened shaft with cogbelt pulley. 14" leads with 2-pin Molex-type connector.



with 15 cog pulley, 3mm pitch, 0.78" wide.

CAT# DCM-130 \$ 15.00 each

with 16 cog pulley, 3mm pitch, 0.80" wide.

CAT# DCM-2413 \$ 15.00 each

12 VDC MOTOR

Fairly-powerful 12Vdc motor. The motor is 3.30" diameter x 4.69" long and has an aluminum mounting plate 4.30" in diameter. The shaft extends 0.630" beyond the mounting plate and has a 1/4-20 L.H. thread on the end 0.40". The spec sheet we have on this motor shows an intended load range of 40-50 oz-in @ 12Vdc, 10A, approx. 3600-4000RPM. Stalled torque is 225 oz-in. 12" 14AWG leads with a round 2-conductor female connector.



CAT# DCM-517 \$18.00 each

MINI-VIBRATING MOTORS

Tiny motor with offset weighted shaft. Designed to vibrate in mobile communications devices. Operate on 1.5-4.5Vdc.

Overall length, including terminals and shaft, 18mm. Body is 4.5mm x 5.5mm x 11mm long. Flat, surface-mount solder tabs.



CAT# DCM-382 \$1.25 each
10 for \$1.10 each 100 for 95¢ each

15mm - length including shaft. 4mm dia. without rubber. Rubber casing is 5 x 6.5 x 11mm. Gold contacts.



CAT# DCM-371 \$1.25 each
10 for \$1.10 each 100 for 95¢ each

13mm - length including shaft. 4mm diameter without rubber. Rubber casing is 5 x 6 x 8mm. Gold contacts.



CAT# DCM-372 \$1.25 each
10 for \$1.10 each • 100 for 95¢ each

Mini pancake vibrator motor.

10mm diameter x 3mm thick. Operates on 1.5 to 4.5Vdc. 21mm long flexi-ribbon cable has two easily accessible solder spots for voltage connection. Motor has a thin rubber pad on one face and peel-off adhesive patch on other side.



CAT# DCM-373 \$1.00 each
100 for 75¢ each

1.5 - 3.6 VDC MOTOR

Small, but powerful DC motor. 0.40" x 0.32" x 0.66" long. Operates on 1.5 - 3.6 Vdc. 110mA @ 3Vdc, no load. 500mA with load. 1mm diameter x 4mm long shaft. Solder-lug terminals.



CAT# DCM-299 \$1.35 each
10 for \$1.20 each

3-20VDC MOTOR

Mabuchi #RS-555PH. 12Vdc (9-20V) motor. Approximately 4500RPM @ 12Vdc, 0.15A (no load rating). 37mm diameter x 58mm long. 3.2mm diameter x 13mm long flattened shaft. Solder-lug terminals.



CAT# DCM-330 \$3.50 each

6-20 VDC MOTOR

RS365SH. No-load rating @ 18Vdc: 0.25A, 19400RPM. 27.7mm dia. x 32.6mm long. Shaft is 2.3mm diameter x 15.6mm long. Solder-loop terminals. Motor face has two tapped (M2.6 x 0.45) mounting holes.



CAT# DCM-367 \$1.85 each
10 for \$1.65 each

8-24 VDC MOTOR

Johnson Motor #64823 3C4921 36mm diameter x 50mm long. 3mm dia. shaft x 14mm long. 0.187" QC / solder terminals. Operates smoothly over 8 -24 Vdc range. 5200 RPM @ 14Vdc, 200 ma, no-load rating.



CAT# DCM-398 \$3.25 each

8 - 16 VDC MOTOR

Mabuchi #FC-280PT-20150.
24.2 x 18.3 x 30.5mm long,
excluding shaft. 2mm diameter x
9mm long splined shaft. No-load rating:
11,800 RPM @ 12Vdc, 0.56A. Push-in-style
terminals. Push wire into slots to make connection.

CAT# DCM-374 \$1.25 each
10 for \$1.15 each • 100 for 95¢ each



12 VDC MOTOR

Mabuchi # RS-555VD.
12Vdc, 750mA (no-load).
Operates over 8-18 Vdc range.
38.5mm diameter x 65mm long.
3.17mm (1/8") diameter shaft. Solder lug / 0.18" qc ter-
minals. **CAT# DCM-354** \$3.50 each



12 VDC IRON CORE MOTOR

Canon Precision #DN26-T41N1B.
4,000 RPM @ 12Vdc / 25mA - No
Load. 25.5mm diameter x 25mm long.
2mm diameter x 13mm shaft. Two
threaded 3mm mounting holes on
17mm centers. Solder-loop terminals.

CAT# DCM-300 \$2.00 each
10 for \$1.75 each



PRECISION BRUSH DC MOTOR

Escap # 16C 18 204 30
Precision, Swiss-made, brushed
DC motor. 16mm diameter x
15.7mm long. 1.5mm dia. x
6mm long shaft. 16000 RPM @ 15Vdc, 6.9mA no-load
measurements. Two M1.6 x 1.4 tapped mounting
holes on 10mm centers. 5" pigtail leads.

CAT# DCM-305 \$9.50 each



12-24VDC MOTOR

Mabuchi RS-380PH.
Operates smoothly on
12 - 24Vdc. 27.5mm diameter x
43mm long. 2.3mm diameter shaft is 14mm long.

CAT# DCM-345 \$2.25 each
125 for \$1.50 each



12 VDC MOTOR

Molon #CM0-1237. Small, but powerful,
DC motor. 1.08" dia. x 1.5" long.
0.095" dia. knurled shaft is 0.41" long.
Operates over a range of 9-18 Vdc. No
load rating: 13,500 RPM @ 12Vdc, 0.28A.
With load: 11,100 RPM @ 1.4 Amps.
Solder lug terminals.

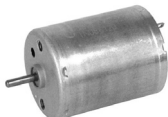
CAT# DCM-298 \$ 2.50 each



12 - 30 VDC MOTOR

Mabuchi #RK 370CA.
24.4mm dia. x 30.8mm long.
2mm diameter x 8mm shaft.
Optimum performance around
18 - 24Vdc. Operates as low as 4Vdc. Two M3.0x0.5
tapped holes in motor face. Solder terminals.

CAT# DCM-375 \$1.75 each
10 for \$1.65 each • 100 for \$1.50 each



12-30 VDC MOTOR

Johnson #340. Operates between
12 and 30 Vdc. 24 Vdc @ 50 mA,
no-load rating. 0.94" dia. x 1.15" long.
2mm dia. x 7mm long shaft.
Solder lug terminals.

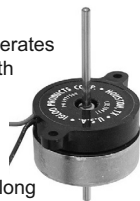
CAT# DCM-272 \$1.15 each
100 for 85¢ each



DC BRUSHLESS MOTOR

12 Vdc, 150 mA (no-load) motor. Operates
efficiently 6-18 Vdc. Plastic base with
metal rotor. Base is 1.45" dia. with
two mounting ears. 1.8" mounting
centers. Metal rotor is 1.48" dia.
Overall height of motor, excluding
shaft is 0.9." 0.12" dia. shaft x 3.03" long
extends from both ends of motor.

CAT# DCM-270 \$3.50 each



12 VDC MOTOR

HTI #HTBRR04206705B-0001
Powerful 12 Vdc motor.
1.7" dia. x 2.62" long.
0.2" dia. x 1.16" long shaft is
threaded at end. Mounted with two screws on a
nylon bracket. 12 Vdc @ 1.3 A. Prepped with 8" leads,
a thermal cut-off, and a momentary slide switch.

CAT# DCM-251 \$3.75 each
10 for \$3.50 each



12 - 30 VDC PRECISION MOTOR

Buehler Motor # 1.13.043.246.02.
No Load Ratings: 1100 RPM
@ 12Vdc / 50mA,
2140 RPM @ 24Vdc /
60mA. Smooth running,
powerful 12 - 30VDC motor.
40mm diameter x 77mm long. Shaft,
4mm dia. X 20mm long with a 16 tooth brass gear
press-fit on shaft. Three tapped mounting holes on
face of motor. 1 Lb.

CAT# DCM-391 \$8.00 each



12 - 30 VDC PRECISION MOTOR

Buehler Motor # 1.13.043.240.04.
No Load Ratings: 1300 RPM @
12Vdc / 50mA, 2600 RPM @
24Vdc / 60mA. Smooth running,
powerful 12 - 30 VDC motor.
40mm diameter x 77mm long. Shaft,
4mm dia. X 20mm long with a 14 tooth
plastic gear press-fit on shaft. Three
tapped mounting holes on face of
motor. 1 Lb. **CAT# DCM-397** \$8.00 each



AC / DC BRUSH MOTOR

Thermally protected, plastic
encased brush-type motor operates
on both 120V AC and DC voltage
above 18 Volts. Rated 120 Vac,
60 Hz, 50W, 0.42 Amps. 14,000 RPM
@ 120 Vac. 3,500 RPM @ 30 Vdc, 240 mA (no-load).
6mm (0.24" diameter) x 1.5" long flattened shaft. Motor
case is 2.93" x 2.43" x 3.45" long with two tapped
mounting holes in motor face. 6.5" leads. UL
CAT# DCM-258 \$4.50 ea. • 10 for \$4.00 ea.



DC GEAR MOTORS

62 / 124 RPM DC GEAR MOTOR

Buehler # 1.61.046.131.00.
No-load Ratings: 62 RPM @
12Vdc, 124 RPM @ 24Vdc.
Overall length, 65mm.
Gearbox diameter, 35mm. 5mm diameter x 26mm
long flattened shaft. Three tapped mounting holes in
gearbox face. Recessed 2-pin female connector.
Our connector, CAT# CON-230P, though not ideal,
will enable connection to the motor.
CAT# DCM-390 \$14.00 each



PRECISION GEARHEAD MOTOR, USED

Pittman # GM8712F191 / PM3662. 96:1 gear ratio. Rated 19.1Vdc. 80 RPM @ 19vdc, 100mA (no-load). 56 RPM @ 12Vdc (no-load). 35mm dia. gearhead. 30mm dia. motor. Overall length of motor and gearhead, 75mm. 4.5mm diameter x 20mm long shaft. Three mounting holes on face of motor. Prepped with 17mm diameter metal gear, collar and mounting plate. Removed from working equipment in very-clean condition.

CAT# DCM-518 \$15.00 each



72 / 144 RPM GEAR MOTOR

Buehler # 1.61.046.132.00. No-load ratings: 72 RPM @ 12Vdc 25mA, 144 RPM @ 24Vdc 30mA. Overall length, 69mm. Gearbox diameter 35mm. 5mm diameter x 26mm long flattened shaft. Three tapped mounting holes in gearbox face. 75mm leads.

CAT# DCM-389 \$12.95 each



PLANETARY GEARHEAD, USED

Mates with Faulhaber 2342 and similar motors with four mounting holes on 26mm centers and an 11mm dia. mating gear with 18 teeth. Gearbox dimensions: 32mm x 32mm x 25mm. 6mm dia. shaft is 35mm long. Exact specs unknown. Final rotational speed was approximately 120RPM when used with Faulhaber 2342 motor at 12Vdc.

CAT# GH-2 \$3.75 each



view with motor (not included) attached

10-42 RPM RIGHT-ANGLE DC GEAR MOTOR W/ ENCODER

Buehler # 1.61.031.119.00. No-load Ratings: 10 / 21 / 42 RPM @ 6 / 12 / 24 Vdc @ 250Ma. 5Vdc, TTL compatible, 50 pulse/RPM encoder mounted on rear.

Overall length, 185mm (7.25"). Motor diameter, 54mm (2.13"). 8mm diameter shaft is 48mm long. Shaft is held in place with a collar and set screw and can be removed and re-installed facing the opposite direction. Three tapped mounting holes on face of gearbox. Two 6" leads to motor. 4", 3-conductor flat cable to encoder. A relatively quiet and powerful motor.

CAT# DCM-393 \$30.00 each



40/80 RPM DC GEAR MOTOR

Buehler # 1.61.046.115.00. No load ratings: 40 RPM @ 12Vdc / 50 mA, 80 RPM @ 24Vdc / 65 mA. Dimensions: Overall length, 69mm. Motor diameter, 31mm. Gear box dia., 35mm. 5mm flattened shaft is 17mm long. 40mm leads w/ 2-pin connector.

CAT# DCM-396 \$14.95 each



3-6 RPM GEARHEAD MOTOR

Powerful little 6-12 Vdc gearhead motor. 2.43" long, excluding shaft. 1.3" diameter x 1.15" long gear-box. Flatted 0.2" diameter x 0.39" long offset shaft. Three tapped mounting holes on motor face. No-load ratings: 3 RPM, 6 Vdc, 75 mA. 6 RPM, 12 Vdc, 85 mA.

CAT# DCM-245 \$13.75 each



5 RPM GEAR MOTOR, 12VDC

Rugged 5 RPM gear motor designed to move baffles in automotive air conditioning. Ideal for continuous or intermittent use where power, slow rotation, low noise and low current are desired. Drive mechanism consists of a small DC motor with a worm gear driving a four gear train. Final drive is a plastic splined shaft, 0.52" diameter x 0.5" long. The composite plastic housing is easily opened for access to the motor, gears and electrical terminals. Overall dimensions of assembly including mounting flanges and shaft is approximately 3.12" x 4.25" x 1.62." No load measurements: 5 RPM @ 13.5 Vdc @ 15 mA.

CAT# DCM-276 \$9.00 ea. • 54 for \$8.50 ea.



12 VDC 58 RPM MINI-MOTOR

Sayama #12SM-AT3. Compact, good-quality 12Vdc gearhead motor. 58RPM, @ 12Vdc, 20mA (no-load). 12mm diameter x 35mm long. Solder-lug terminals. 2mm diameter x 6mm long flattened shaft.

CAT# DCM-318 \$12.95 each



24 VDC GEAR MOTOR W/ TURNTABLE

Relatively powerful, low-current DC motor and gearbox with a 4.9" dia. plastic (nylon?) turntable with a rubber o-ring circumference that could be used to drive another wheel. Turntable can be removed from motor and rubber ring on turntable can be removed as well. Motor gearbox has a 3/8" dia. shaft that is flattened and splined.

Specifications:

45RPM @ 24 Vdc, 60mA - operates at 12Vdc at 1/2 speed. Drive motor - Mabuchi RS-380SH. 1.1" dia. x 1.67". Gearbox - Molon #CHM-2435-1. 2.75" x 3.00" x 0.57" Threaded mounting holes in four corners. 3/8" diameter shaft, flattened and splined.

CAT# DCM-351 \$9.75 each



AUTOMOTIVE MIRROR ADJUSTER ASSEMBLY

Automotive side-view mirror assembly consists of two small 12 Vdc motors with push/ pull worm-gear mechanisms. The motors raise and lower a 4.28" square plastic platform. The worm-gear mechanisms can push or pull depending on polarity and will allow manual adjustment without voltage present. Each motor / worm-gear assembly is independent, protected with a rubber boot for moisture protection. The motors can be separated from the larger assembly by drilling off the mirror platform. Overall thickness of motors and platform is approximately 2".

CAT# DCM-273 \$3.00 per assembly



STEPPER MOTORS

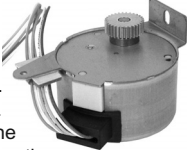
4-WIRE STEPPER MOTOR

Mineba NMB-MAT # PM42L-048-UAJ9.
24V stepper motor. 48 steps per revolution, 7.5 Deg per step.
2-2 phase. 7 Ohm coils.
42mm diameter x 22mm long.
3mm diameter shaft with brass gear (9.5mm diameter, 16 cog). Four 7" leads.
CAT# SMT-112 \$2.50 each



GEAR REDUCTION STEPPER MOTOR

Japan Servo #KP48FP8G-504
3:25 gear reduction.
7.5 Degrees per step. 24Vdc.
95 Ohms/phase. 6-wire motor.
Body is 1.88" diameter x 1.03".
L-shape mounting flange on one side, extended mounting tab on other side. 3/16" dia. shaft with a 0.62" dia. brass gear.
CAT# SMT-359 \$2.50 each

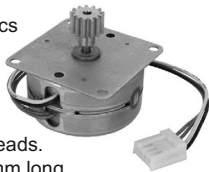


STEPPER MOTORS

Portescap #S42L048S02-M5
24V, 5 Ohm, 7.5 Degree per step.
42mm diameter x 22mm. Two mounting holes on 51mm centers.
Four 3" leads. Shaft - 3mm diameter x 11mm long. 16 tooth, 9.75mm dia. brass gear.
CAT# SMT-356 \$2.50 each

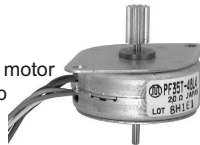


Thomson Airpax Mechatronics # S42M048T52. 3.1Vdc, 3.6 Ohm, 7.5 Degree per step. 42mm diameter x 22mm. Four mounting holes on 36mm centers. Four 6" leads. Shaft - 3mm diameter x 11mm long. 13 tooth, 12mm diameter brass gear.
CAT# SMT-355 \$2.50 each



UNIPOLAR STEPPER

Mabuchi # PF35T-48L4
Four phase, unipolar stepper motor with 6 leads. 3.6 Degree step angle. 20 Ohms. 7V, 350mA.
1.38" diameter x 0.59" long.
Mounting flange has two holes on 1.68" centers.
Dual shaft, 0.078" dia. Brass gear on one side, 10 teeth, 0.25" dia. 2.75" leads with socket connector.
CAT# SMT-108 \$3.25 each



16 WIRE STEPPER MOTOR

Brand unknown -
Made in Belgium # PD 12
Code number :
9904 112 12001
3 Deg. 45' step angle.
175mA. 150 g/cm torque. 1.5" diameter x 2.48" long. 1.5" square mounting plate.
0.15" dia. x 0.40" long shaft. 16 leads, 11" long.
CAT# SMT-118 \$4.75 each



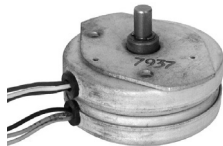
ROTARY STEPPER MOTOR

Nippon Pulse #PF55-48D1.
55mm diameter x 25mm
5V unipolar stepper motor.
7.5 Degrees per step.
2-phase. 5 Ohms per phase.
Shaft is 3mm in dia. x 4mm long with a small keyway on one side. Six 12" leads.
CAT# SMT-120 \$2.00 each



6-WIRE STEPPER

North American Philips Controls # 504-0004.
12 Volts, 8 Watt stepper motor. 2.25" diameter x 0.95". 0.25" diameter x 0.37" long shaft. 6" leads. Motors are unused, but discolored from storage conditions.
CAT# SMT-358 \$2.00 each



6-LEAD STEPPER MOTOR

Sanyo Denki 3.5V, 1.5A, 1.8 Degree/step.
"Step-Syn" 103G770-1854.
57mm diameter x 51mm long motor. 57mm x 57mm square mounting flange with mounting holes on 47.14mm centers.
6.3mm (0.25") diameter x 24mm long shaft with 15mm diameter plastic cog pulley, 1.5mm pitch. Six 7" leads.
CAT# SMT-362 \$14.00 each



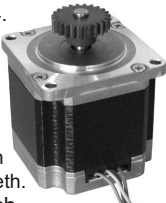
4-WIRE STEPPER MOTOR W/ GEARS

Sanyo #B00224. 4-lead, 12Vdc stepper motor. 11.6 Ohm coils. 42mm diameter x 23mm body. Mounting flanges with holes on 50mm centers. 3mm diameter x 13mm long shaft. Prepped with 18mm diameter, 20 tooth gear. 8" leads.
CAT# SMT-125 \$2.50 each



4-LEAD, 1.8 DEG STEPPER MOTOR

Shinano Kenshi # STP 58D3004.
56 x 56 x 54mm stepper.
1.8 Degree per step. 0.48 Ohm. Four mounting holes on 47mm centers. Four 4" wire leads prepped with 5-pin connector.
6.5mm (0.25") dia. shaft x 16mm long. 25mm dia, gear with 23 teeth.
CAT# SMT-119 \$14.00 each



STEPPER MOTOR WITH GEARBELT AND PULLEYS

Novatronics #
20M34R1-A
5-wire stepper motor with 10 cog pulley attached to shaft. Includes a 14 cog nylon pulley with a 13/32" flatted bore and a 13" circumference cog belt (Gates 23E 09460). The motor is 2" diameter x 2.46" long. 1/4" diameter x 0.65" long shaft. Pulley is attached with set screw. Five 15" leads.
CAT# SMT-110 \$8.50 each



115 VAC SHADED POLE MOTOR

115 VAC SHADED POLE MOTOR

Howard Industries # 1175-06-4
115Vac, 11W shaded pole motor.
3" x 2.5" x 1.1". Mounting holes on 1.95" centers. 1.05" dia. spindle with tapped holes on 0.85" centers. 18" leads.
CAT# ACM-341
\$3.00 each



AC GEAR MOTORS

1 RPM 120 VAC MOTOR

Bristol Motors 425C. Timing-style motor. 115Vac 60Hz. 2" diameter x 1.32". 0.125" dia. x 0.15" long shaft with a 0.31" dia. 18 tooth brass, press-fit gear attached. 6' leads.

CAT# ACM-339 \$4.50 each



27 VAC TIMING MOTOR

North American Philips #KR45118-P8. 27V. 4W. 0-10Hz. 0-6 RPM CW rotation. 1.87" x 2.44" oval x 0.86". Flanges with mounting holes on 2" centers. 1/8" diameter flattened shaft, 0.39" long uncut holes.

CAT# ACM-360 \$2.50 each



LINEAR ACTUATOR FOR AUTO DOOR LOCK

12 Vdc motor-drive actuator for automotive door locks. Nylon plunger moves 0.75". Push or pull, depending on polarity. Includes mounting hardware and a 10" metal extension rod which fits through the hole in the end of the plunger. Overall dimensions of actuator assembly (retracted): 8.42" x 2.35" x 1.15". Rubber boot protects against moisture and dust. Pigtail leads.

CAT # DLA-1 \$5.50 each



ROTATING PARTS

(GEARS, PULLEYS, BELTS, O-RINGS)

MINIATURE ROLLER CHAIN



Works with 1/4" pitch chain sprockets below.

CAT # CHN-25 \$ 2.50 per foot

MASTER LINK for # 25 roller chain

CAT # ML-25 \$1.00 each

SPROCKETS FOR #25 CHAIN

11 tooth nylon sprocket. 8mm bore. 20mm diameter x 11mm thick collar.

CAT# GR-116 \$1.30 each



12 tooth nylon sprocket. 8mm bore. 20mm diameter x 11mm thick collar.

CAT# GR-117 \$1.30 each



14 tooth nylon sprocket. 19mm diameter x 8mm thick collar with 9.75mm bore.

CAT# GR-118 \$1.40 each



24 tooth, 2" diameter, metal sprocket. 13/32" (10mm) half-moon bore with 10mm collar.

CAT# GR-100 \$1.50 each



12 tooth nylon sprocket. 6.5mm flattened bore. 0.5" long collar.

CAT# GR-87 \$1.00 each



24 tooth, 2" diameter, 24 tooth metal sprocket. 6.35mm pitch. 13/32" keyed bore. 0.6" collar threaded for set screw.

CAT# GR-103 \$1.50 each



28 tooth, 2.34" diameter, metal sprocket. 13/32" (10mm) half-moon bore with 10mm collar.

CAT# GR-101 \$1.50 each



1-WAY ROLLER CLUTCH W/ 15-TOOTH SPROCKET

Roller clutch with one-way bearing. Rotates freely in one direction; fixed in other direction. 15 tooth sprocket for 1/4" #25 roller chain. Fits 8mm shaft with 10mm collar. 3mm hole for retention pin. Sprocket o.d., 34mm. Overall length of assembly, 29mm.

CAT# CH-8 \$7.95 each

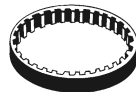


GEARBELTS AND PULLEYS

Synchronous drive "XL" gearbelt. 1/5" pitch. 1/4" wide.

40 Teeth 80XL025

CAT # CGB-40 50¢ each



Gates # 423W00648 148MC. 350mm circumference x 5.5mm wide. 3mm pitch.

CAT# CGB-148 \$1.00 each

Mitsubishi S2M660 10S2D 10107. 660mm circumference x 6mm wide. 2mm pitch.

CAT# CGB-660 \$2.00 each

44 COG GEARBELT PULLEY

44 tooth metal cog pulley. 28mm dia. x 11mm wide. 2mm pitch. Mates with our belt, CAT# CGB-660. 10mm bore with 3mm holes for fastening pin (not included).

CAT# GR-119 75¢ each



28 COG GEAR

28 tooth nylon cog gear. 26mm diameter x 11mm wide. 3mm pitch. Mates with our belt, CAT# CGB-148. 8mm flattened bore.

CAT# GR-120 50¢ each



42 TOOTH NYLON SPROCKET

0.325" bore. Doesn't mate with the other gears on this page.

CAT# GR-105 50¢ each



PLANETARY GEAR

Currie #BD-360. Planetary Gear Assembly for Currie Electric Bikes, scooters and US Pro-drive Conversion Kits. Fits 0.32" (8mm) dia. flattened bore on one side and splined 12mm bore on other side. 4.5:1 gear ratio on interior ring. 4:1 ratio on outer ring. 75mm outer dia. x 21mm thick. Eight 4.5mm mounting holes in outer ring.

CAT# PLG-360 \$9.50 each

