

Easy solar-panel maximum-power-point tracking for pulsed-load applications

By Chris Glaser

Applications Engineer

Introduction

Many solar-panel-powered applications need only pulses of power to operate. Systems for data collection or measurement sampling frequently need to turn on, perform a measurement or some other task, transmit the processed or measured data, and return to sleep. In many cases, wirelessly transmitting the data consumes the largest portion of output power. These required power pulses, either for the system itself or for transmitting data, typically are difficult to support with a power-limited supply such as a solar panel. By operating at the solar panel's maximum power point (MPP) and by intelligently drawing the power from the panel, energy can be successfully harnessed to power a pulsed load. This article presents a simple and cost-effective solution for maximum-power-point tracking (MPPT) for use in such pulsed-load systems.

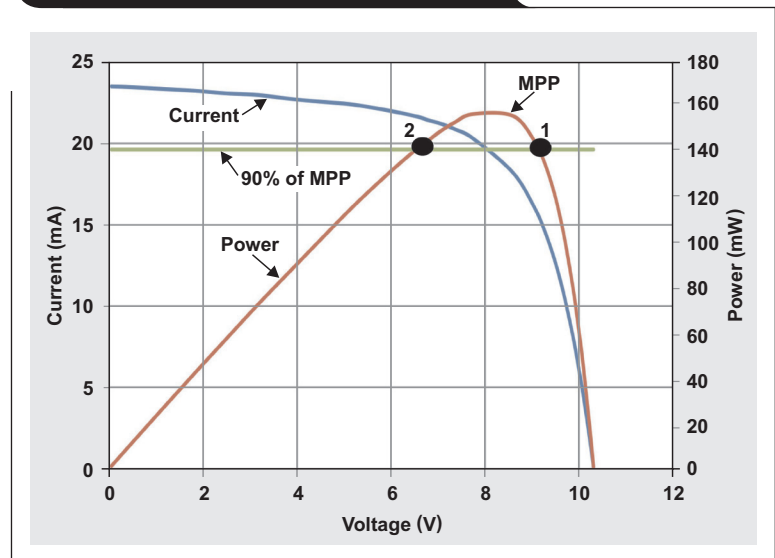
Solar-panel characteristics

Solar panels provide peak output power when operated at their MPP. The MPP is a voltage and current corresponding to the panel's highest obtainable output power. MPPT harnesses this power from a solar panel even as the amount of illumination varies. A characteristic of solar panels is that the panel voltage decreases as the current drawn from the panel increases. If the current drawn is too high, the voltage collapses and the amount of power drawn becomes very low. Figure 1 illustrates a particular solar panel's output current and output power versus its output voltage. The MPP is labeled. A horizontal green line on the graph shows where the output power is at least 90% of the MPP. Above this line, between Points 1 and 2, the panel provides the most power.

When the solar-panel-powered load requires only pulses of power and does not need to be powered 100% of the time, one simple way to operate within 90% of the MPP is to turn on the load at Point 1 and turn it off at Point 2. When the load is on, it draws its required power, which lowers the panel voltage. This moves the operating point from Point 1, through the MPP point, and over to Point 2. At Point 2, the load is turned off and the panel voltage rises again. Even with this simple operation, there are three issues that must be overcome.

First, the load likely requires a different voltage than what the panel outputs. Thus, a high-efficiency power supply is required to convert the variable and relatively high panel voltage into a constant voltage for the load.

Figure 1. Graph of a solar panel's MPP



Second, the panel voltage should be measured and the power supply disabled or enabled based on that voltage. Most power supplies have a digital input to enable or disable them. Such an input has a very imprecise threshold to differentiate a logic low from a logic high. With an imprecise threshold, the panel voltage cannot be wired directly to the enable input. Instead, an external circuit with a precise threshold is required. A supply-voltage supervisor can be used, but this adds the cost and complexity of a second device.

Third, the quickly changing panel voltage must be greatly slowed down to allow sufficient operating time to accomplish the required tasks. Changing the panel voltage from Point 1 to Point 2 requires almost no time—theoretically zero seconds. During this time, when the voltage varies from Point 1 to Point 2, the power supply for the load must turn on and the load must perform its task. This requires a power supply with a very fast turn-on and a long enough holdup of the panel voltage to perform the necessary tasks.

The MPPT solution

There are few single-device, cost-effective solutions that operate from the wide voltage range of power-limited solar-panel inputs while efficiently providing a regulated output voltage, a quick start-up, and operation within 90% of the MPP. However, the Texas Instruments TPS62125 is

one such device that accepts input voltages of up to 17 V, operates with efficiencies in excess of 90%, starts up in less than 1 ms, and has an enable input pin with a precise threshold that can be directly wired to the solar panel's voltage for MPPT. This eliminates the need for an additional device to perform this function. Figure 2 shows a complete solution.

The voltage divider, formed by R1 and R2, is configured to turn on the power supply at Point 1 in Figure 1. Until the power supply is enabled, the device itself holds the node between R2 and R3 at ground potential. After the supply is enabled, the device releases this node, and R3 is then part of the voltage divider. When the solar-panel voltage falls to Point 2, the device turns off and holds the node low between R2 and R3 again. At this point, the panel voltage begins to rise again until it reaches the turn-on threshold. This provides a fully programmable turn-on and turn-off voltage that can be configured to any solar panel.

The bulk input capacitor, C3, stores enough energy from the solar panel to power the load for the required duration and provides the charge for starting up the power supply. The panel delivers a current corresponding to its voltage to either the power supply or C3. When the power supply is off, the solar panel delivers its current to the capacitor. When the power supply is on, the capacitor and solar panel provide the necessary current to power the load. Since C3 merely stores energy and this energy is released over a relatively lengthy period of time, C3 can be a low-cost electrolytic capacitor.

Computing the required bulk input capacitance

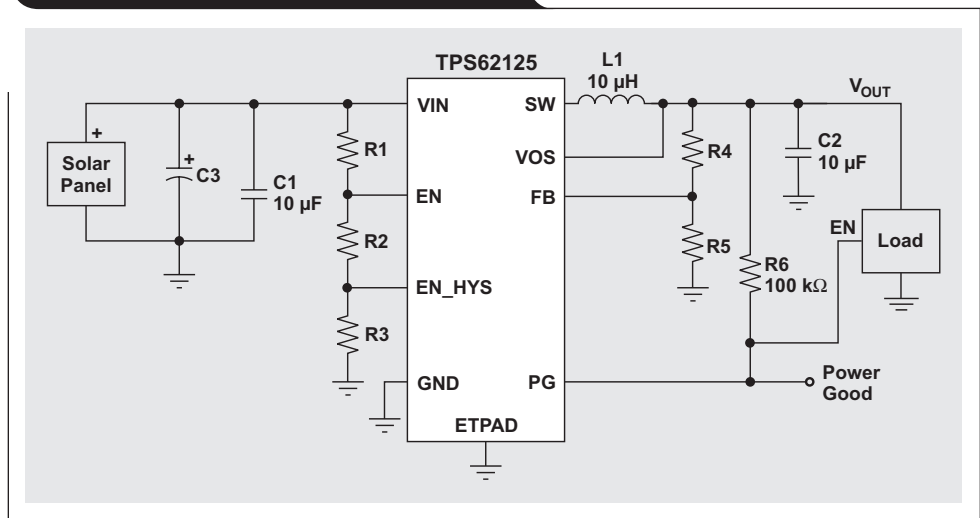
The first step in designing the MPPT circuit is determining the load's power needs and then computing the amount of required bulk input capacitance based on these power requirements and the chosen solar panel. As an example, assume a remote sensing circuit requires 3.3 V at 250 mA (825 mW) for a duration of 15 ms. These are typical needs for a system that contains a measurement device, a micro-processor, and an RF transmitter.

After the load's power needs are determined, the required value for C3 is calculated. First, the input current required to power the load is found from Equation 1:

$$I_{IN} = \frac{\text{Output Power}}{V_{IN} \times \eta} \quad (1)$$

V_{IN} is the average solar-panel voltage between Points 1 and 2 in Figure 1, and η is the power-supply efficiency at the given output power. Notice that the typical efficiency of

Figure 2. MPPT circuit for a pulsed load



the power supply at a V_{IN} of about 7.8 V and an output power of 825 mW is around 87%. Using these numbers, $I_{IN} = 122$ mA. This is much greater than what Figure 1 shows the solar panel to be capable of providing, so C3 must store enough energy to provide the remaining current for 15 ms. Equation 2 determines the required C3 value based on the load requirements and solar-panel characteristics:

$$C3 \geq \frac{(I_{IN} - I_{\text{Panel(Avg)}}) \times t_{ON}}{V_{P1} - V_{P2}} \quad (2)$$

V_{P1} and V_{P2} are the voltages at Points 1 and 2, which are respectively about 9 V and 6.5 V for this panel, and correspond to the voltage change across C3 as it discharges. The required load operating time, given by t_{ON} , is 15 ms. Finally, $I_{\text{Panel(Avg)}}$ is the average current from the solar panel when the panel is operated within 90% of its MPP. As seen in Figure 1, this current is about 19 mA.

From Equation 2, it is determined that C3 should be greater than 618 µF. A 680-µF capacitor is used to provide some margin in the operating time.

Calculating the enable pin's voltage divider

R1, R2, and R3 form a fully configurable voltage divider with hysteresis for the enable (EN) pin. Equations 3 and 4 are used to set the resistor values:

$$V_{P1} = 1.20 \text{ V} \times \left(\frac{R1}{R2} + 1 \right) \quad (3)$$

$$V_{P2} = 1.15 \text{ V} \times \left(\frac{R1}{R2 + R3} + 1 \right) \quad (4)$$

R1 is chosen first, and 1 MΩ is a good starting value. With this, R2 is calculated to be 153.8 kΩ. The closest standard value of 154 kΩ is chosen. R3 should be 60.9 kΩ, and 60.4 kΩ is the nearest standard value.

Additional MPPT circuit configuration

Another feature that can be configured to benefit the typical application is using the power good (PG) output to control the load's enable (EN) input. The PG pin is held low when the power supply is off. The pull-up resistor, R6, pulls it high, but only when the power supply is enabled and the output voltage is in regulation. Connecting the PG output directly to the load's EN input keeps the load disabled until the input voltage has risen above V_{P1} and until the output voltage is high enough to properly power the load. As the power supply is disabled from the input voltage falling below V_{P2} , the PG pin is actively pulled low, which also disables the load. This configuration ensures that the load is enabled only when its supply voltage is in regulation, avoiding a low supply voltage that possibly could corrupt the load's performance or data.

Test results

Figure 3 shows the MPPT circuit in operation. The panel voltage, V_{IN} , remains between 9 V and 6.5 V (V_{P1} and V_{P2} , respectively). Once V_{OUT} enters regulation, the load enables and draws 250 mA. When the panel's voltage drops to 6.5 V, V_{OUT} is disabled and thereby disables the load current. The solar panel provides an average of 19 mA at all times. The load has a run time of around 18 ms in Figure 3, meeting the 15-ms requirement. This run time roughly matches the calculations, since the value of C3 increased above the result of those calculations.

Figure 4 replaces the output-voltage trace in Figure 3 with the trace for I_{Cap} , the current from C3. As V_{IN} decreases, the current leaving the capacitor is positive—the capacitor provides its stored energy to the power supply, which then supplies that energy to the load. Once the load turns off, due to the panel voltage decreasing to 6.5 V and the power supply disabling, the current from C3 goes negative—the capacitor recharges from the panel and stores energy for the next cycle. The current from C3 spikes briefly before the load is enabled, as the power supply turns on when the panel voltage is sufficiently high. Additional input current provided by C3 is needed during start-up.

Conclusion

This article has demonstrated a simple and cost-effective circuit for tracking a solar panel's MPP for a pulsed-load system, such as a remote measurement system that transmits its data via RF transmitters. This topology also can be configured to any solar panel and any pulsed load.

Figure 3. Operation of MPPT circuit within 90% of MPP

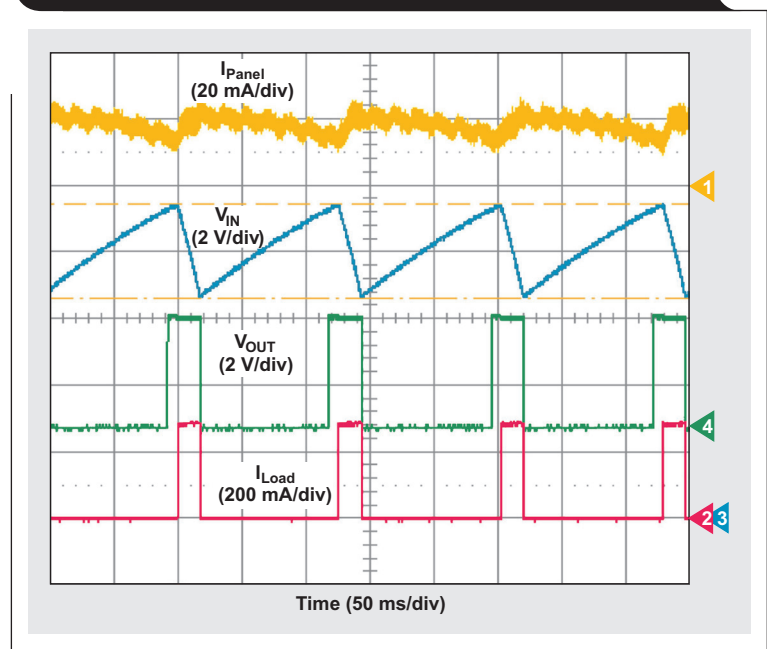
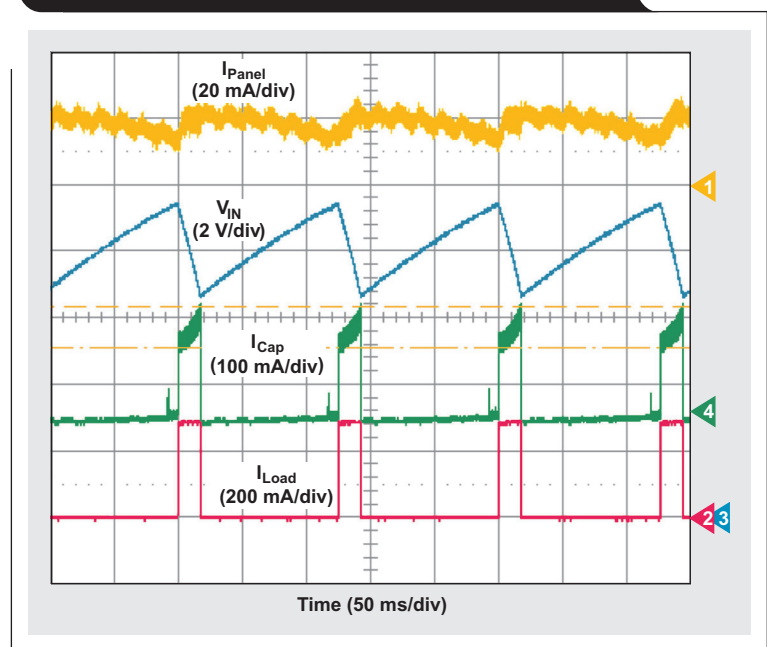


Figure 4. Bulk input capacitor (C3) supplying a circuit operating within 90% of MPP



Related Web sites

power.ti.com
 www.ti.com/energyharvesting
 www.ti.com/product/TPS62125

TI Worldwide Technical Support

Internet

TI Semiconductor Product Information Center Home Page

support.ti.com

TI E2E™ Community Home Page

e2e.ti.com

Product Information Centers

Americas	Phone	+1(972) 644-5580
Brazil	Phone	0800-891-2616
Mexico	Phone	0800-670-7544
	Fax	+1(972) 927-6377
	Internet/Email	support.ti.com/sc/pic/americas.htm

Europe, Middle East, and Africa

Phone	
European Free Call	00800-ASK-TEXAS (00800 275 83927)
International	+49 (0) 8161 80 2121
Russian Support	+7 (4) 95 98 10 701

Note: The European Free Call (Toll Free) number is not active in all countries. If you have technical difficulty calling the free call number, please use the international number above.

Fax	+ (49) (0) 8161 80 2045
Internet	www.ti.com/asktexas
Direct Email	asktexas@ti.com

Japan

Phone	Domestic	0120-92-3326
Fax	International	+81-3-3344-5317
	Domestic	0120-81-0036
Internet/Email	International	support.ti.com/sc/pic/japan.htm
	Domestic	www.tij.co.jp/pic

Asia

Phone	
International	+91-80-41381665
Domestic	<u>Toll-Free Number</u>
Note: Toll-free numbers do not support mobile and IP phones.	
Australia	1-800-999-084
China	800-820-8682
Hong Kong	800-96-5941
India	1-800-425-7888
Indonesia	001-803-8861-1006
Korea	080-551-2804
Malaysia	1-800-80-3973
New Zealand	0800-446-934
Philippines	1-800-765-7404
Singapore	800-886-1028
Taiwan	0800-006800
Thailand	001-800-886-0010
Fax	+8621-23073686
Email	tiasia@ti.com or ti-china@ti.com
Internet	support.ti.com/sc/pic/asia.htm

Important Notice: The products and services of Texas Instruments Incorporated and its subsidiaries described herein are sold subject to TI's standard terms and conditions of sale. Customers are advised to obtain the most current and complete information about TI products and services before placing orders. TI assumes no liability for applications assistance, customer's applications or product designs, software performance, or infringement of patents. The publication of information regarding any other company's products or services does not constitute TI's approval, warranty or endorsement thereof.

A011012

E2E is a trademark of Texas Instruments. All other trademarks are the property of their respective owners.

IMPORTANT NOTICE

Texas Instruments Incorporated and its subsidiaries (TI) reserve the right to make corrections, enhancements, improvements and other changes to its semiconductor products and services per JESD46C and to discontinue any product or service per JESD48B. Buyers should obtain the latest relevant information before placing orders and should verify that such information is current and complete. All semiconductor products (also referred to herein as "components") are sold subject to TI's terms and conditions of sale supplied at the time of order acknowledgment.

TI warrants performance of its components to the specifications applicable at the time of sale, in accordance with the warranty in TI's terms and conditions of sale of semiconductor products. Testing and other quality control techniques are used to the extent TI deems necessary to support this warranty. Except where mandated by applicable law, testing of all parameters of each component is not necessarily performed.

TI assumes no liability for applications assistance or the design of Buyers' products. Buyers are responsible for their products and applications using TI components. To minimize the risks associated with Buyers' products and applications, Buyers should provide adequate design and operating safeguards.

TI does not warrant or represent that any license, either express or implied, is granted under any patent right, copyright, mask work right, or other intellectual property right relating to any combination, machine, or process in which TI components or services are used. Information published by TI regarding third-party products or services does not constitute a license to use such products or services or a warranty or endorsement thereof. Use of such information may require a license from a third party under the patents or other intellectual property of the third party, or a license from TI under the patents or other intellectual property of TI.

Reproduction of significant portions of TI information in TI data books or data sheets is permissible only if reproduction is without alteration and is accompanied by all associated warranties, conditions, limitations, and notices. TI is not responsible or liable for such altered documentation. Information of third parties may be subject to additional restrictions.

Resale of TI components or services with statements different from or beyond the parameters stated by TI for that component or service voids all express and any implied warranties for the associated TI component or service and is an unfair and deceptive business practice. TI is not responsible or liable for any such statements.

Buyer acknowledges and agrees that it is solely responsible for compliance with all legal, regulatory and safety-related requirements concerning its products, and any use of TI components in its applications, notwithstanding any applications-related information or support that may be provided by TI. Buyer represents and agrees that it has all the necessary expertise to create and implement safeguards which anticipate dangerous consequences of failures, monitor failures and their consequences, lessen the likelihood of failures that might cause harm and take appropriate remedial actions. Buyer will fully indemnify TI and its representatives against any damages arising out of the use of any TI components in safety-critical applications.

In some cases, TI components may be promoted specifically to facilitate safety-related applications. With such components, TI's goal is to help enable customers to design and create their own end-product solutions that meet applicable functional safety standards and requirements. Nonetheless, such components are subject to these terms.

No TI components are authorized for use in FDA Class III (or similar life-critical medical equipment) unless authorized officers of the parties have executed a special agreement specifically governing such use.

Only those TI components which TI has specifically designated as military grade or "enhanced plastic" are designed and intended for use in military/aerospace applications or environments. Buyer acknowledges and agrees that any military or aerospace use of TI components which have **not** been so designated is solely at the Buyer's risk, and that Buyer is solely responsible for compliance with all legal and regulatory requirements in connection with such use.

TI has specifically designated certain components which meet ISO/TS16949 requirements, mainly for automotive use. Components which have not been so designated are neither designed nor intended for automotive use; and TI will not be responsible for any failure of such components to meet such requirements.

Products

Audio	www.ti.com/audio
Amplifiers	amplifier.ti.com
Data Converters	dataconverter.ti.com
DLP® Products	www.dlp.com
DSP	dsp.ti.com
Clocks and Timers	www.ti.com/clocks
Interface	interface.ti.com
Logic	logic.ti.com
Power Mgmt	power.ti.com
Microcontrollers	microcontroller.ti.com
RFID	www.ti-rfid.com
OMAP Mobile Processors	www.ti.com/omap
Wireless Connectivity	www.ti.com/wirelessconnectivity

Applications

Automotive and Transportation	www.ti.com/automotive
Communications and Telecom	www.ti.com/communications
Computers and Peripherals	www.ti.com/computers
Consumer Electronics	www.ti.com/consumer-apps
Energy and Lighting	www.ti.com/energy
Industrial	www.ti.com/industrial
Medical	www.ti.com/medical
Security	www.ti.com/security
Space, Avionics and Defense	www.ti.com/space-avionics-defense
Video and Imaging	www.ti.com/video

TI E2E Community e2e.ti.com